



ESR | COMMERCIAL SERIES

AFFORDABLE EXCELLENCE

Style, Security, and Durability for Every Project

At ESR, we believe great design and superior protection should be accessible to all. Our impact-resistant windows and doors are carefully crafted to combine style, safety, and strength. Designed in collaboration with top architects and designers, the products are perfect for multi-family and commercial projects where security and performance are essential.

Our extensive industry expertise ensure compliance with Miami-Dade County building codes, giving you peace in every installation.





OUR PROMISE TO YOU

Reliable Quality

We are passionate about delivering high-quality products made from aluminum and glass that exceed your expectations. Whether it is design, durability, or performance.

Your Safety Comes First

We prioritize safety at every level. From the workplaces where our products are made to the homes and buildings where they are installed, we work hard to ensure safe, and secure outcomes for everyone involved.

Sustainability Matters

Protecting the environment is part of our promise. We strive to use resources efficiently, minimize waste, and create a positive impact on the planet.

Trust in Every Step

Our commitment to integrity encourages us to uphold the highest standards, protecting our supply chains and address risks as smuggling and contamination to earn and keep trust to our values.

COMMERCIAL SERIES

DOOR
9000

STOREFRONT
8000

PARTITION
2030

RAILING
3030

LOUVER
COMP



DOOR & STOREFRONT

ESR 9000

Built tough for high-traffic areas, the ESR 9000 is a 2 1/4" thick impact-rated entrance door perfect for offices and commercial spaces. Its superior durability and security make it an ideal choice. Compatible with the ESR 8000.



Features

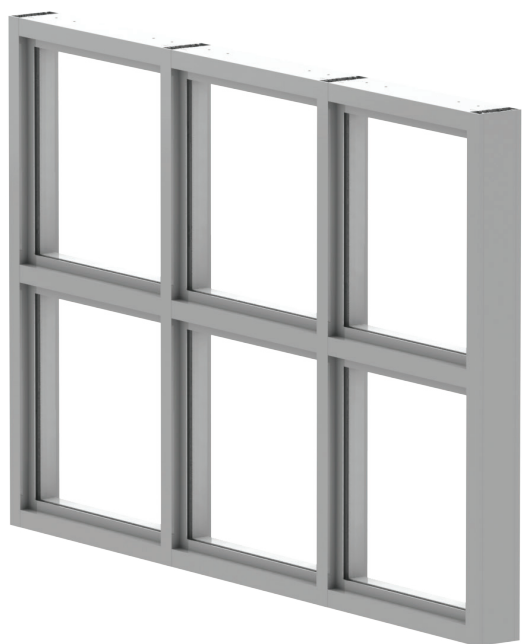
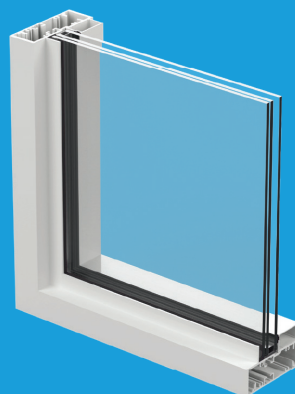
- Frame depth: 5"
- Sightline frame: 1 3/4"
- Outswing motion
- Available with butt hinges
- Designed for 3/16" laminated glass
- Maximum size:
 - Width: X 47", XX 89"
 - Height: 110 1/2". With transom: 120"
- Variety of accessories including three-point lock, concealed vertical rod exit devices, push-pull handle
- Pre-assembled door leaf
- Fully weather-stripped
- Stainless steel hardware
- High and ADA thresholds
- Corners are reinforced with welded aluminum brackets

Performances

- Large and small missile impact
- Design loads:
 - +120/-120 psf (Single Door) SMI
 - +90/-90 psf (double door) SMI and LMI
- Water infiltration resistance
- Screw Cover

ESR 8000

The ESR 8000 is a pre-assembled, impact-resistant storefront system. With screw spline construction and pre-glazed panels, it's ready for quick and efficient installation. It pairs seamlessly with the ESR 9000 impact door.



Features

- LMI (Large missile impact)
- Frame depth: 5"
- Sightline frame: 1 3/4" + 1" recessed fin
- Designed for 3/16" laminated glass
- Maximum size: 60" width x 144" height
- Maximum size: 72" width x 120" height
- Minimum curving radius for architectural shapes: 20"
- Integral door adaptor
- Screw cover
- Surface applied flat muntins

Performances

- Large missile impact
- Design load: +130/-130 PSF.
- Water infiltration resistance
- U-value: 1.04 (1/4 SB70 + 090 PVB + 1/4 Clear)

System Description

- Large missile impact rated
- Maximum panel size:
 - 84" width x 180" height (ESR-8000 Jumbo)
- Tested design load: +90/-120 psf (ESR-8000)
 - +/-70psf (ESR-8000 Jumbo)
- Tested water infiltration: 12 psf.
- Tested air infiltration: 6.24 psf.

Features

- Screw Cover
- Integral door adaptor
- Pre-assembled and pre-glazed
- Surface applied flat muntins

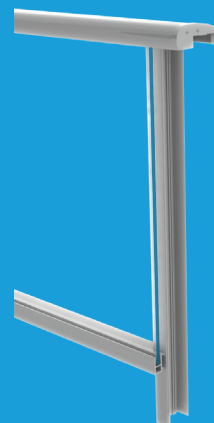


A photograph of a modern balcony with a glass railing. The balcony floor is made of light-colored wood. The railing consists of dark metal posts and glass panels. The view from the balcony shows a lush green landscape with trees and a red-tiled roof in the distance. The sky is blue with white clouds. The word "RAILING" is written in large, blue, outlined letters on a dark grey rectangular background at the bottom of the image.

RAILING

ESR 3030

The ESR 3030 modular glass railing system is built for strength and elegance. Pre-assembled aluminum frames are embedded on-site, and the glass panels lock securely for a clean, polished look.



Features

- Four railing cap options available
- Options of bottom rail available
- Pre-assembled & glazed
- Reinforcement available
- For embedding into concrete
- Cap width: 5 $\frac{3}{4}$ " or 5 $\frac{1}{2}$ "
- Mullion size: 3" x 3"
- Hidden verticals
- Designed for $\frac{7}{16}$ " laminated glass
- Maximum tested size:
 - Panel width: 61 $\frac{1}{2}$ "
 - Panel height: 44"

Performances

- Design load: +/- 120 PSF.
- Tested and certified TAS202, ANSI Z97, ASTM E935
- Anodized and painted
- Silicone gaskets for improved durability
- 90° corner profile available



PARTITION



ESR 2030

The ESR 2030 is a sleek and versatile glass partition wall designed to brighten and elevate interior spaces. Its modern design blends advanced technology with sophisticated simplicity, making it perfect for any environment.



System Description

- Configuration:
 - Glass panel pivot door with ladder handle
 - Glass panel swing door with lever handle
 - Glass panel sliding door with ladder handle
- Frame depth: 1 3/8"
- Sightline: 1 3/8"
- Finishes anodized and black painted

Glass Panel Door

Glass Swing Door	
Thickness	3/8"
Width	39" Max
Maximum weight	220 lbs
Glass Sliding Door	
Thickness	3/8"
Width	39" Max
Maximum weight	154 lbs
Glass Pivot Door	
Thickness	3/8"
Width	39" Max
Maximum weight	220 lbs

Glass Panel Fix

Thickness	1/4" to 1/2"
Width	48" Max
Maximum weight	280 lbs

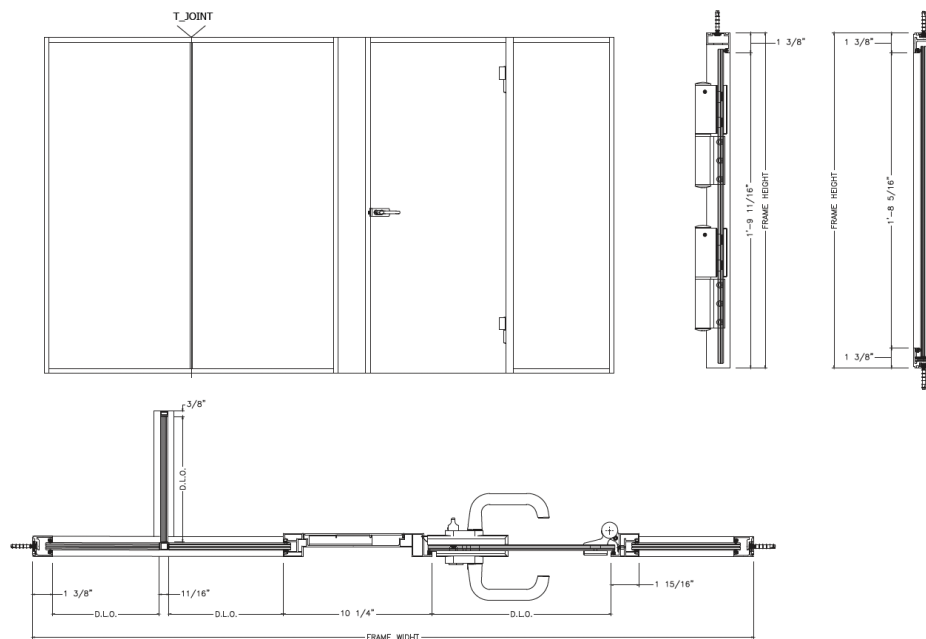
PARTITION

ESR COMMERCIAL SERIES

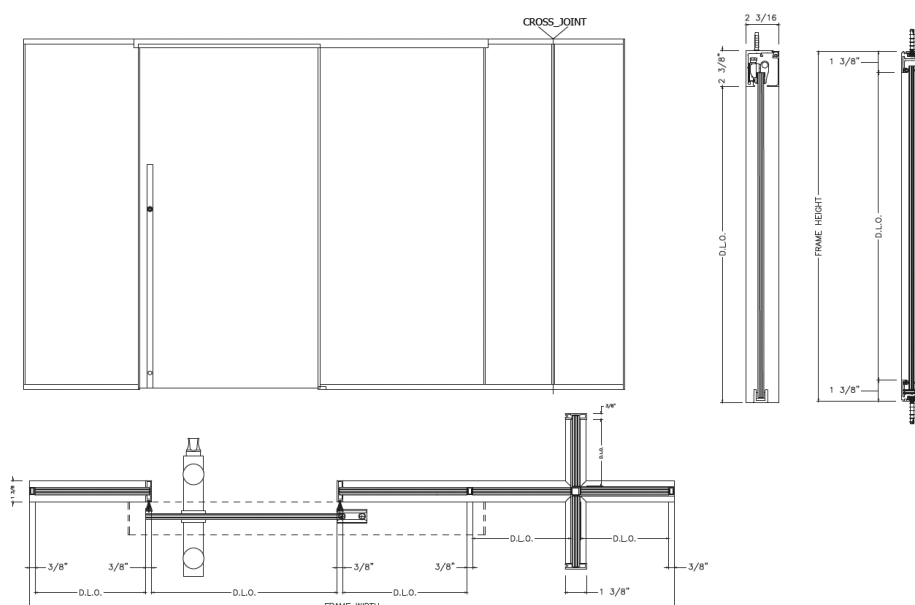
PARTITION ESR 2030

Configurations ESR 2030

T Joint Option with Swing Door



Cross Joint Option with Sliding Door

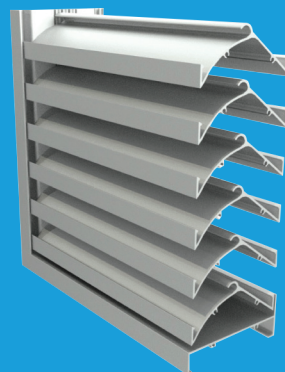


A close-up photograph of a grey metal louvre system. The louvers are horizontal and closely spaced, creating a strong sense of depth and texture. A dark grey rectangular box is superimposed over the upper left portion of the image, containing the word "LOUVER" in a bold, blue, sans-serif font with a white outline. To the right of the main louvre panel, a vertical metal support structure is visible, featuring several small, evenly spaced screws.

LOUVER

ESR LOUVER COMP

The COMP is a stationary aluminum louver system built to protect air intake and exhaust openings in exterior walls. Tested and certified under Florida standards, it stands up to impacts, wind loads, and extreme weather conditions.



System Description

- Frame: 5" Depth, 6063-T6 extruded aluminum, .081" nominal wall thickness
- Blades: 6063-T6 extruded aluminum, .081" nominal wall thickness. Double Drainable, sight-proof blades spaced 2" on center.
- Construction: Mechanically fastened
- Finish: Mill
- Minimum Louver Size: 12" W x 12" H
- Maximum Louver Size: 120" W x 60" H or 60" W x 120" H (Single Section)
- Blade Brace Angle: Depending on wind load, louver size or other special requirements, louvers will have rear mounted blade brace angles, which increases overall depth of louver.
- Max Design Pressure: 150 PSF

Features

- Hurricane Resistant
- Stainless Steel Hardware
- Available in Blank-Off Panels (Standard or Insulated)
- Assortment of bird and insect screens in removable frame (inside mounted, rear)



All content in this document is protected by copyright laws and is property of ESR, its affiliates, or a licensed third party and may be modified without prior notice. Reproduction, modification, dissemination, distribution, sell or transfer, either in whole or part, without prior written permission is prohibited. Product sizes and pressures may vary based on project specific conditions. 2025 © ESR.



Featured Commercial Lines

Our quality control program reflects our unwavering commitment to exceeding industry standards. Certified by leading organizations, we ensure our products and services consistently meet and surpass the latest regulations, delivering excellence you can trust.

Certifications



Our quality control program is proof of our constant determination to surpass accepted quality standards. We are certified by the top companies in the industry to ensure that our products and services stay up to date and comply with the rules and regulations of the industry.

The information contained herein is exclusive property of ESR, who reserves the right to modify it, including but not limited to the designs and its specifications, without notice.
2025 ESR. All rights reserved. V - January 2025