



**ESR** | COMMERCIAL SERIES

# AFFORDABLE EXCELLENCE

**Style, Security, and Durability for Every Project**

At ESR, we believe great design and superior protection should be accessible to all. Our impact-resistant windows and doors are carefully crafted to combine style, safety, and strength. Designed in collaboration with top architects and designers, the products are perfect for multi-family and commercial projects where security and performance are essential.

Our extensive industry expertise ensure compliance with Miami-Dade County building codes, giving you peace in every installation.



# OUR PROMISE TO YOU

---

## Reliable Quality

We are passionate about delivering high-quality products made from aluminum and glass that exceed your expectations. Whether it is design, durability, or performance.

## Your Safety Comes First

We prioritize safety at every level. From the workplaces where our products are made to the homes and buildings where they are installed, we work hard to ensure safe, and secure outcomes for everyone involved.

## Sustainability Matters

Protecting the environment is part of our promise. We strive to use resources efficiently, minimize waste, and create a positive impact on the planet.

## Trust in Every Step

Our commitment to integrity encourages us to uphold the highest standards, protecting our supply chains and address risks as smuggling and contamination to earn and keep trust to our values.

# COMMERCIAL SERIES

---

**DOOR**

9000

**STOREFRONT**

8000

**PARTITION**

2030

**RAILING**

3030

**LOUVER**

COMP



**DOOR &  
STOREFRONT**

## ESR 9000

---

Built tough for high-traffic areas, the ESR 9000 is a 2 1/4" thick impact-rated entrance door perfect for offices and commercial spaces. Its superior durability and security make it an ideal choice. Compatible with the ESR 8000.



### Features

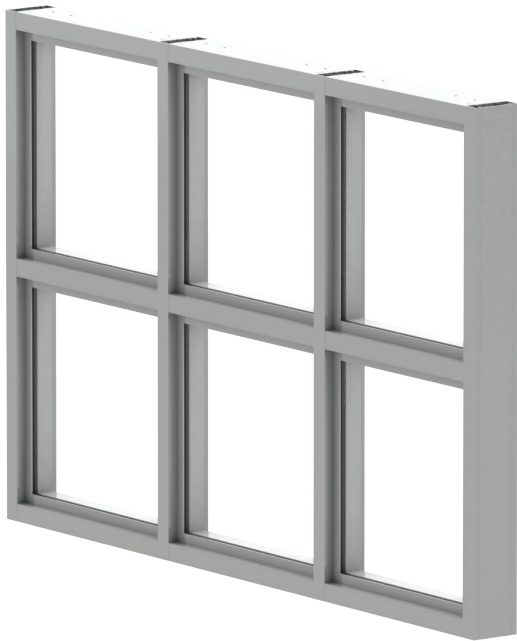
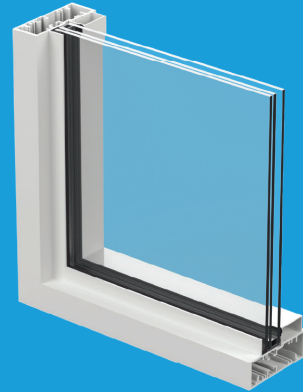
- Frame depth: 5"
- Sightline frame: 1 3/4" or 2 1/2"
- Outswing motion
- Available with butt hinges or offset pivots
- Designed for 3/16" laminated glass
- Maximum size:
  - Width: X 47", XX 89"
  - Height: 110 1/2"
- Variety of accessories including three-point lock, concealed vertical rod exit devices, overhead concealed closer, push-pull handle, etc.
- Pre-assembled door leaf
- Fully weather-stripped
- Stainless steel hardware
- High and ADA thresholds
- Corners are reinforced with welded aluminum brackets

### Performances

- Large and small missile impact
- Design loads:
  - +120/-120 psf (Single Door) SMI
  - +90/-90 psf (double door) SMI and LMI
- Water infiltration: 18 PSF.

## ESR 8000

The ESR 8000 is a pre-assembled, impact-resistant storefront system. With screw spline construction and pre-glazed panels, it's ready for quick and efficient installation. It pairs seamlessly with the ESR 9000 impact door.



### Features

- LMI (Large missile impact)
- Frame depth: 5"
- Sightline frame: 1 3/4" + 1" recessed fin
- Designed for 9/16" laminated glass
- Maximum size: 60" width x 144" height
- Maximum size: 72" width x 120" height
- Minimum curving radius for architectural shapes: 20"
- Integral door adaptor
- Screw cover
- Surface applied O.G or flat muntins

### Performances

- Large missile impact
- Design load: +130/-130 PSF.
- Water infiltration: 19.5 PSF.
- U-value: 1.04 (1/4 SB70 + 090 PVB + 1/4 Clear)

### System Description

- Large missile impact rated
- Maximum panel size:
  - 84" width x 180" height (ESR-8000 Jumbo)
- Tested design load: +90/-120 psf (ESR-8000)
  - +/-70psf (ESR-8000 Jumbo)
- Tested water infiltration: 12 psf.
- Tested air infiltration: 6.24 psf.



### Features

- Screw cover
- Integral door adaptor
- Pre-assembled and pre-glazed
- Surface applied ogee or flat muntins



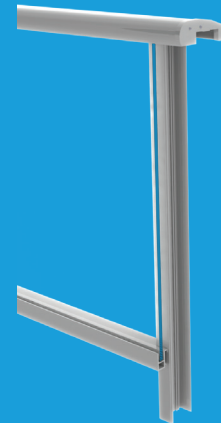
**RAILING**



## ESR 3030

---

The ESR 3030 modular glass railing system is built for strength and elegance. Pre-assembled aluminum frames are embedded on-site, and the glass panels lock securely for a clean, polished look.



### Features

- Four railing cap options available
- Options of bottom rail available
- Pre-assembled & glazed
- Reinforcement available
- For embedding into concrete
- Cap width: 5  $\frac{3}{4}$ " or 5  $\frac{1}{2}$ "
- Mullion size: 3" x 3"
- Hidden verticals
- Designed for  $\frac{7}{16}$ " laminated glass
- Maximum tested size:
  - Panel width: 61  $\frac{1}{2}$ "
  - Panel height: 44"

### Performances

- Design load: +/- 120 PSF.
- Tested and certified TAS202, ANSI Z97, ASTM E935
- Anodized and painted
- Silicone gaskets for improved durability
- 90° corner profile available



# PARTITION



# ESR 2030

The ESR 2030 is a sleek and versatile glass partition wall designed to brighten and elevate interior spaces. Its modern design blends advanced technology with sophisticated simplicity, making it perfect for any environment.



## System Description

- Configuration:
  - Wood panel swing door
  - Glass panel swing door
  - Glass panel sliding door
- Frame depth: 1 3/8"
- Sightline: 1 3/8"
- STC: 33
- Finishes anodized and black painted

## Wood Panel Swing Door - Maximum sizes

### Wood Panel Swing Door

Hinges	Door Width			
	32"	36"	42"	48"
2	185 lbs	176 lbs	143 lbs	132 lbs
3	211 lbs	198 lbs	160 lbs	149 lbs
4	233 lbs	220 lbs	171 lbs	158 lbs

### Aluminum & Glass Swing Door

Hinges	Door Width			
	32"	36"	42"	48"
2	224 lbs	220 lbs	180 lbs	165 lbs
3	253 lbs	246 lbs	202 lbs	185 lbs
4	282 lbs	275 lbs	216 lbs	198 lbs

## Glass Panel Door

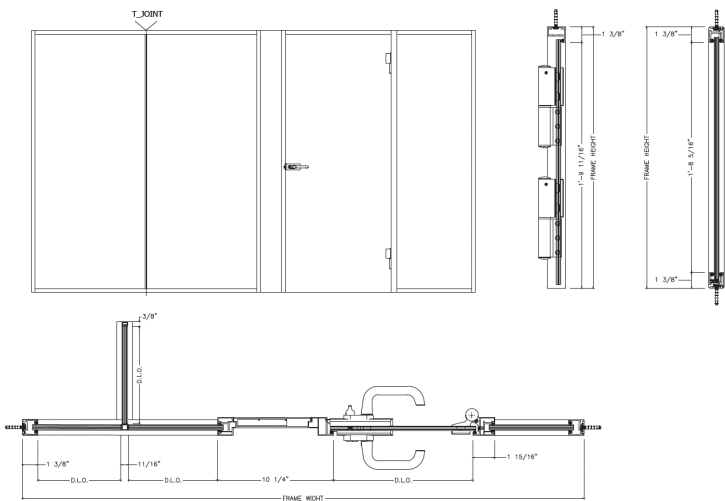
Glass Swing Door	
Thickness	5/16" to 7/8"
Width	31.49" to 39.37"
Maximum weight	220 lbs
Glass Swing Door	
Thickness	5/16" to 1/2"
Width	26" minimum
Maximum weight	154 lbs

## PARTITION ESR 2030

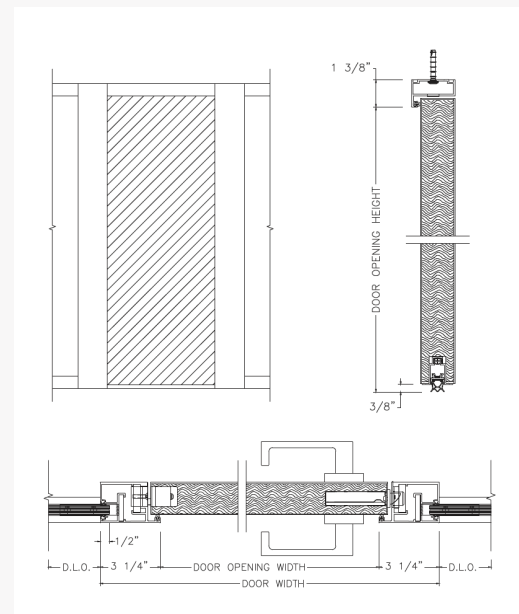
### Configurations ESR 2030

### Swing Door Options - Preliminary

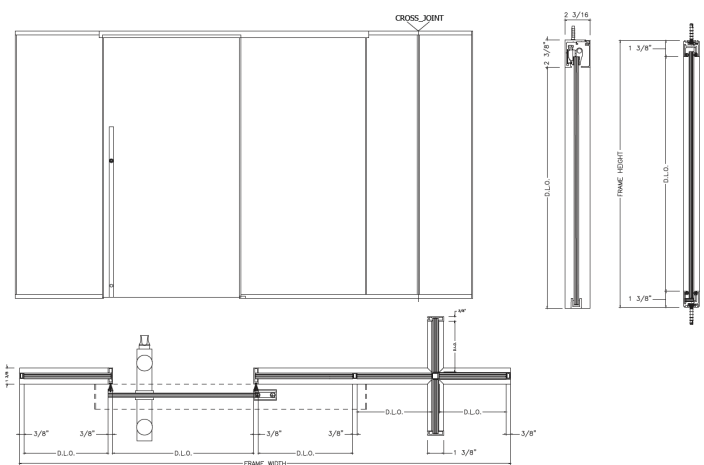
#### T Joint Option



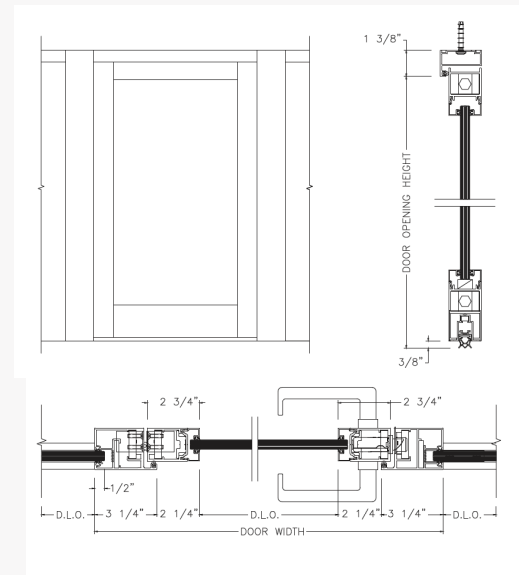
#### Wood Panel Option



#### Cross Joint Option



#### Glass Panel Option

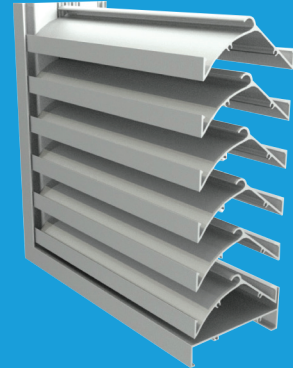


**LOUVER**

## ESR LOUVER COMP

---

The COMP is a stationary aluminum louver system built to protect air intake and exhaust openings in exterior walls. Tested and certified under Florida standards, it stands up to impacts, wind loads, and extreme weather conditions.



### System Description

- Frame: 5" Depth, 6063-T6 extruded aluminum, .081" nominal wall thickness
- Blades: 6063-T6 extruded aluminum, .081" nominal wall thickness. Double Drainable, sight-proof blades spaced 2" on center.
- Construction: Mechanically fastened
- Finish: Mill
- Minimum Louver Size: 12" W x 12" H
- Maximum Louver Size: 120" W x 60" H or 60" W x 120" H (Single Section)
- Blade Brace Angle: Depending on wind load, louver size or other special requirements, louvers will have rear mounted blade brace angles, which increases overall depth of louver.
- Max Design Pressure: 150 PSF

### Features

- Hurricane Resistant
- Stainless Steel Hardware
- Available in Blank-Off Panels (Standard or Insulated)
- Assortment of bird and insect screens in removable frame (inside mounted, rear)



All content in this document is protected by copyright laws and is property of ESR, its affiliates, or a licensed third party and may be modified without prior notice. Reproduction, modification, dissemination, distribution, sell or transfer, either in whole or part, without prior written permission is prohibited. Product sizes and pressures may vary based on project specific conditions. 2025 © ESR.



## Featured Commercial Lines

Our quality control program reflects our unwavering commitment to exceeding industry standards. Certified by leading organizations, we ensure our products and services consistently meet and surpass the latest regulations, delivering excellence you can trust.

## Certifications



Our quality control program is proof of our constant determination to surpass accepted quality standards. We are certified by the top companies in the industry to ensure that our products and services stay up to date and comply with the rules and regulations of the industry.

The information contained herein is exclusive property of ESR, who reserves the right to modify it, including but not limited to the designs and its specifications, without notice.  
2025 ESR. All rights reserved. V - January 2025